

TREERADAR

RADAR IMAGING FOR NON-INVASIVE ASSESSMENT OF TREE AND ROOT HEALTH

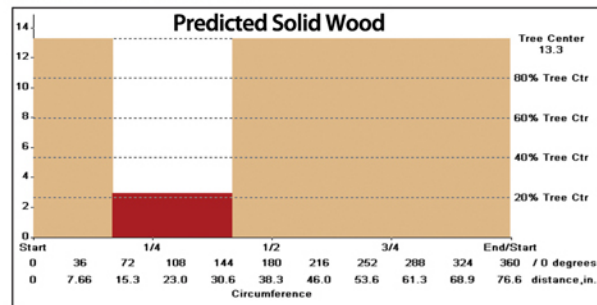
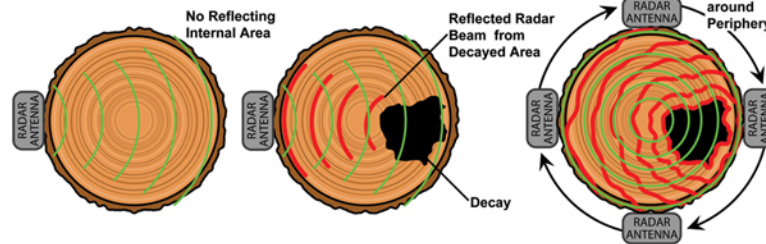
About the TRU™ System

The Tree Radar Unit (TRU™) System is an established technology to aid arborists interested in providing tree risk assessment and root mapping services for their residential, commercial and municipal customers. The TRU portable radar imaging system creates accurate non-invasive images of the internal trunk and subsurface structural root mass.

- ✔ Quantifies trunk decay
- ✔ Produces accurate images of the root structure, location & depth
- ✔ Competitive advantage for tree care professionals
- ✔ Higher customer satisfaction
- ✔ Easy to use

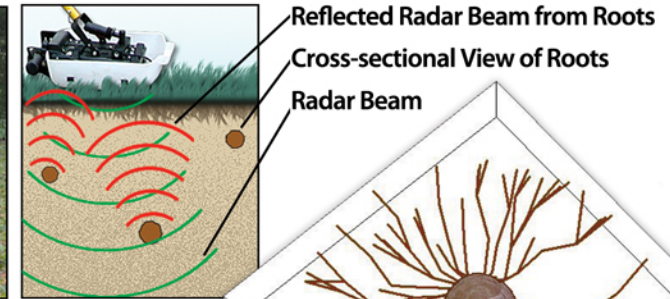
Trunk Inspection Procedure

Decay in the tree trunk creates an air pocket in the removed wood space. The air pocket can be either a total hollow, or a very early stage of decay where the wood consistency has changed but no visible hollow has yet appeared. The TRU system is sensitive to, and can detect, both conditions, including difficult-to-detect early stage decay. TRU can also detect vertical surface cracks that are not visible.

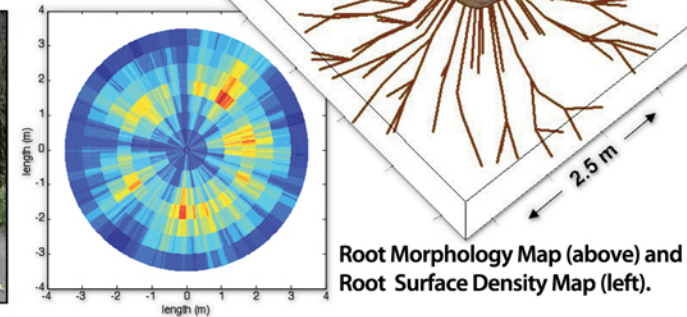


Root Inspection Procedure

Scanning Bare Surface



Scanning Covered Surface



Most trees fall over because of compromised roots.

The TRU system can non-invasively inspect soils - either covered or uncovered - to provide images of the layout and density of subsurface structural roots.

Contact TreeRadar Today

The Tree Radar Unit (TRU™) System provides a competitive edge to those companies that recognize the benefits of this cutting-edge technology. For more information call 301-589-2265 or visit us online at www.TreeRadar.com.



The TRU™ System

The TRU™ System is composed of three easy to use devices. The Field Computer and Radar Antenna are used together for trunk scanning, and the Scanning Cart is added for root scanning.



Field Computer



Radar Antenna



Root Scanning Cart

Serious Consequences result from Undetected Tree Decay



The Tree Radar Unit (TRU™) is a **Non-Invasive** system for scanning both trunks and soils to aid in saving trees as well as prevent potential hazards.

Much like an MRI solves a critical medical need for very high-resolution, non-invasive imaging of the body, the Tree Radar Unit (TRU™) radar imaging system creates the same type of high-resolution, non-invasive image of the internal structure of a tree and its root mass. This image fills a critical gap in the quantitative analysis of tree health and structural integrity.

Tree Radar has developed the patented TRU system for tree diagnosis that represents a novel application of ground penetrating radar (GPR) technology. GPR is an established technology that is used worldwide to non-destructively investigate subsurface objects.



Saving Trees, One at a Time

Tree Radar, Inc.
512 Ashford Road
Silver Spring, Maryland 20910
www.TreeRadar.com

Radar Vision

The only
Non-Invasive
Trunk & Root
Inspection System



TREERADAR
MRI for TREES®